

Summit School at Nyack - Cafeteria Addition
 Summit School at Nyack
 Section 60.18, Block 1, Lot 1
 339 North Broadway
 Nyack, NY 10960

August 10, 2020: Roof Plan added, roof details modified, Pages renumbered minor corrections throughout

Unauthorized addition or alteration of these drawings is a violation of Section 7209 (2) of The New York State Education Law

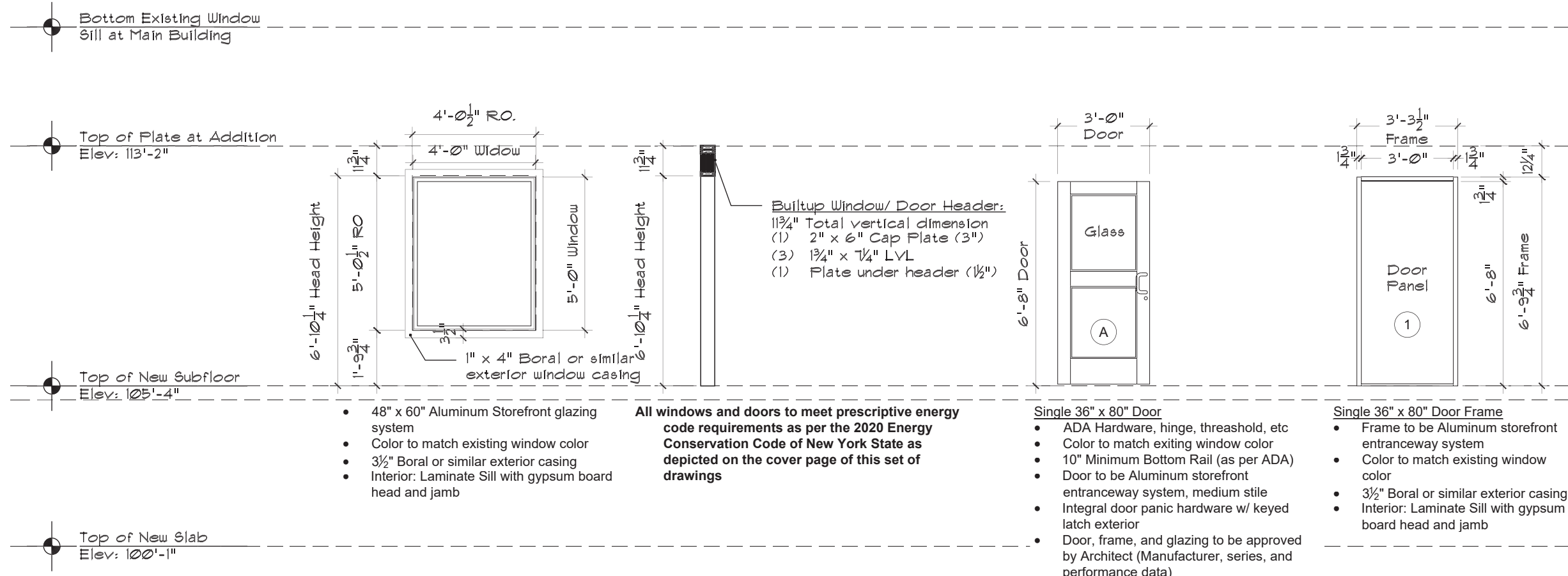
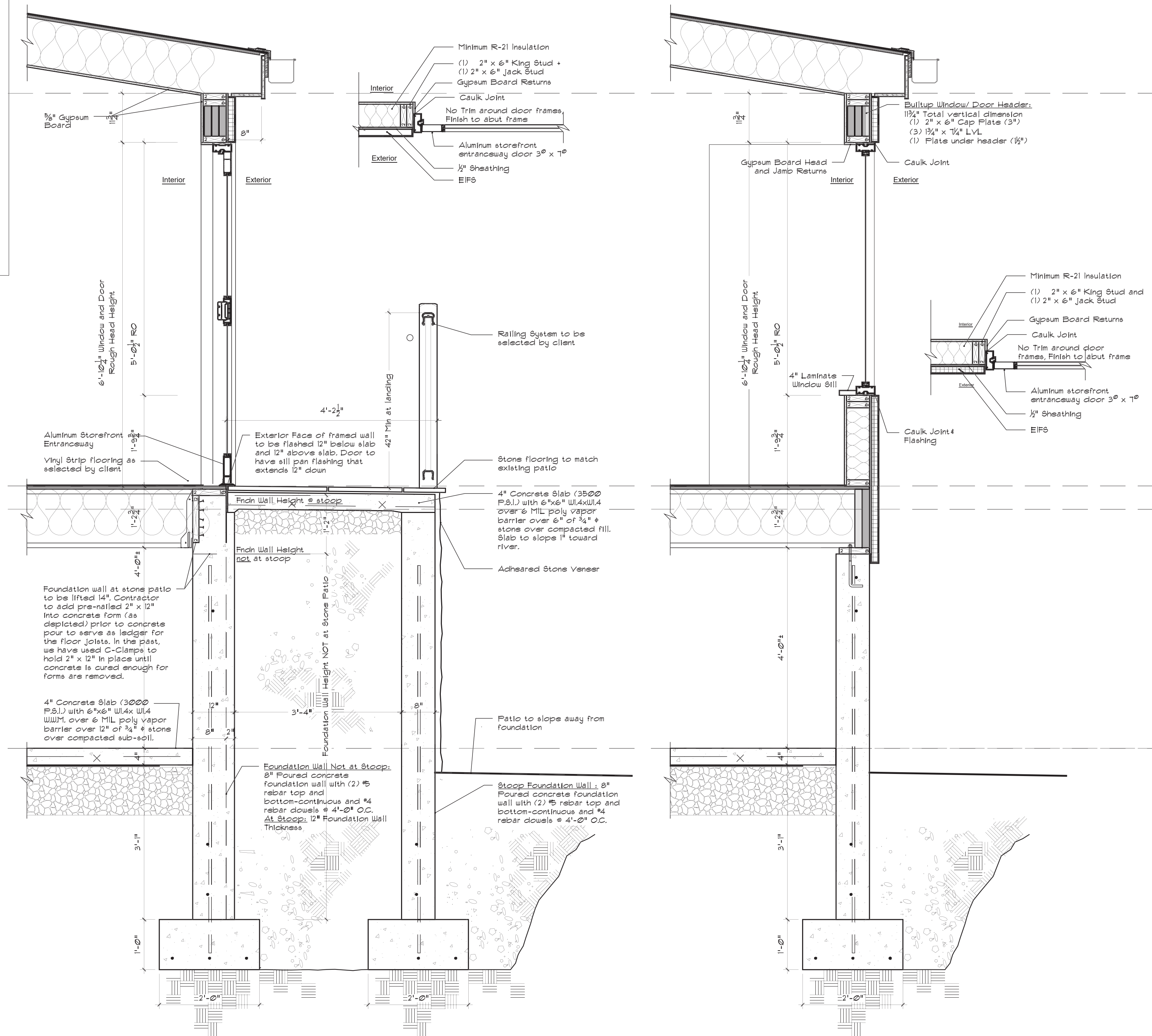
ARCHITECT
 Christopher JP Collins, RA, LEED^{AP}
 10 Nicland Drive, Warwick New York 10990
 T: (845) 988-0233 | F: (845) 988-0255
 E: cjpearchitect@hotmail.com

1 Proposed Stair / Railing Detail
 A302 Scale: 1/4" = 1'-0"

Drawn By: cc
 Checked By: cjpc
 Submittal Date: July 2, 2020

Drawings on this page:
 Wall Section at Stone Arch
 Property plan

A302
 13 of 15



Summit School at Nyack - Cafeteria Addition
 Summit School at Nyack
 Section 60.18, Block 1, Lot 1
 339 North Broadway
 Nyack, NY 10960

August 10, 2020: Roof Plan added, roof details modified. Pages renumbered minor corrections throughout.

3 | Aluminum Storefront Window, Door, and Frame Elevations
 A601 | 1/4" = 1'-0"

1 | Door Head, Jamb, and Sill Details and Section at New Exgress Landing
 A601 | Scale: 3/4" = 1'-0"

2 | Aluminum Storefront Window, Head, Jamb and Sill
 A601 | Scale: 3/4" = 1'-0"

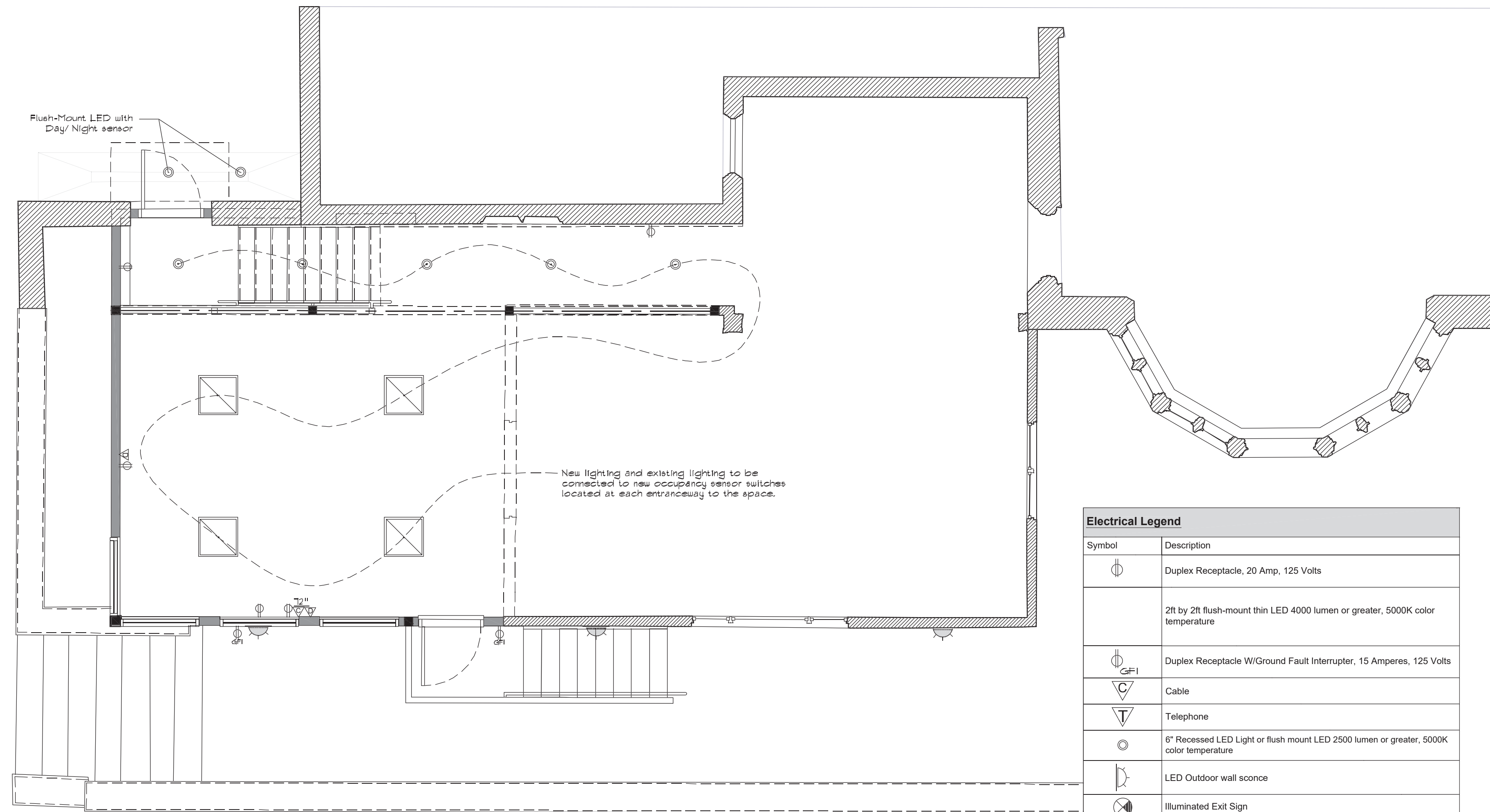
ARCHITECT
 cipc
 Christopher J.P. Collins, RA, LEED^{AP}
 10 Nieland Drive, Warwick New York 10990
 T: (845) 988-0233 | F: (845) 988-0255
 E: cipcarchitect@hotmail.com

Drawn By: cc
 Checked By: cipc
 Submittal Date: July 2, 2020

Drawings on this page:
 Window and Door Head
 Jamb and Sill Details

A601
 14 of 15

Unauthorized addition or alteration of these drawings is a violation of Section 7209 (2) of The New York State Education Law



New lighting and existing lighting to be connected to new occupancy sensor switches located at each entranceway to the space.

Electrical Legend	
Symbol	Description
	Duplex Receptacle, 20 Amp, 125 Volts
	2ft by 2ft flush-mount thin LED 4000 lumen or greater, 5000K color temperature
	Duplex Receptacle W/Ground Fault Interrupter, 15 Amperes, 125 Volts
	Cable
	Telephone
	6" Recessed LED Light or flush mount LED 2500 lumen or greater, 5000K color temperature
	LED Outdoor wall sconce
	Illuminated Exit Sign
	Data outlet, wall mounted

1 | Electrical Plan
E101 | Scale: 1/4" = 1'-0"



August 10, 2020: Roof Plan added, roof details modified, Pages renumbered minor corrections throughout

Summit School at Nyack - Cafeteria Addition

Summit School at Nyack
Section 60.18, Block 1, Lot 1
339 North Broadway
Nyack, NY 10960

Unauthorized addition or alteration of these drawings is a violation of Section 7209 (2) of The New York State Education Law

ARCHITECT

Christopher JP Collins, RA, LEED^{AP}
10 Nicland Drive, Warwick New York 10990
T: (845) 988-0233 | F: (845) 988-0255
E: cjparchitect@hotmail.com

Drawn By: cc
Checked By: cjpg

Submittal Date:
July 2, 2020

Drawings on this page:
Electrical Floor plan

E101
15 of 15