

ALL BOUNDARY & TOPOGRAPHY INFORMATION IS REFERENCED FROM A SURVEY PREPARED BY ANTHONY R. DELIVANO, P.E. USA REGISTERED JUNE 25, 2003.

1. SITE PLAN IS GOOD FOR 3 YEAR TIME PERIOD FROM DATE OF APPROVAL.

2. APPLICANT/OWNER: MARESCA HOLLOW ROAD NYACK, NY

3. NO POOL BACKWASH TO BE USED. A CARTRIDGE FILTER SYSTEM TO BE UTILIZED.

4. EJECTOR PUMP TO BE REMOVED FROM SITE.

5. EJECTOR PUMP TO BE REMOVED FROM SITE. RELIEF MEASURES AS NECESSARY.

6. POOL CONTRACTOR TO INCORPORATE GROUNDWATER RELIEF MEASURES AS NECESSARY.

7. CONTRACTOR TO BE LIMITED TO UNDERPINNING AROUND POOL INTO EXISTING FOUNDATION.

8. INFILTRATION TESTING SHALL BE DONE AT THE BOTTOM OF THE PRACTICE PRIOR TO INSTALLATION.

9. ANY EXCAVATED MATERIAL SHALL BE REMOVED FROM SITE.

10. 6" OF FREEBOARD IN POOL TO PROVIDE ZERO NET INCREASE IN RUN-OFF.

SEE PLAN FOR THE POOL.

SEE PLAN FOR THE POOL.

SEE PLAN FOR THE POOL.

SEE PLAN FOR THE POOL.

SEE PLAN FOR THE POOL.

SEE PLAN FOR THE POOL.

SEE PLAN FOR THE POOL.

SEE PLAN FOR THE POOL.

SEE PLAN FOR THE POOL.

SEE PLAN FOR THE POOL.

SEE PLAN FOR THE POOL.

SEE PLAN FOR THE POOL.

SEE PLAN FOR THE POOL.

SEE PLAN FOR THE POOL.

SEE PLAN FOR THE POOL.

SEE PLAN FOR THE POOL.

SEE PLAN FOR THE POOL.

SEE PLAN FOR THE POOL.

SEE PLAN FOR THE POOL.

SEE PLAN FOR THE POOL.

SEE PLAN FOR THE POOL.

SEE PLAN FOR THE POOL.

SEE PLAN FOR THE POOL.

SEE PLAN FOR THE POOL.

SEE PLAN FOR THE POOL.

SEE PLAN FOR THE POOL.

SEE PLAN FOR THE POOL.

SEE PLAN FOR THE POOL.

SEE PLAN FOR THE POOL.

SEE PLAN FOR THE POOL.

SEE PLAN FOR THE POOL.

SEE PLAN FOR THE POOL.

SEE PLAN FOR THE POOL.

SEE PLAN FOR THE POOL.

SEE PLAN FOR THE POOL.

SEE PLAN FOR THE POOL.

SEE PLAN FOR THE POOL.

SEE PLAN FOR THE POOL.

SEE PLAN FOR THE POOL.

SEE PLAN FOR THE POOL.

SEE PLAN FOR THE POOL.

SEE PLAN FOR THE POOL.

SEE PLAN FOR THE POOL.

SEE PLAN FOR THE POOL.

SEE PLAN FOR THE POOL.

SEE PLAN FOR THE POOL.

SEE PLAN FOR THE POOL.

SEE PLAN FOR THE POOL.

SEE PLAN FOR THE POOL.

SEE PLAN FOR THE POOL.

SEE PLAN FOR THE POOL.

SEE PLAN FOR THE POOL.

SEE PLAN FOR THE POOL.

SEE PLAN FOR THE POOL.

SEE PLAN FOR THE POOL.

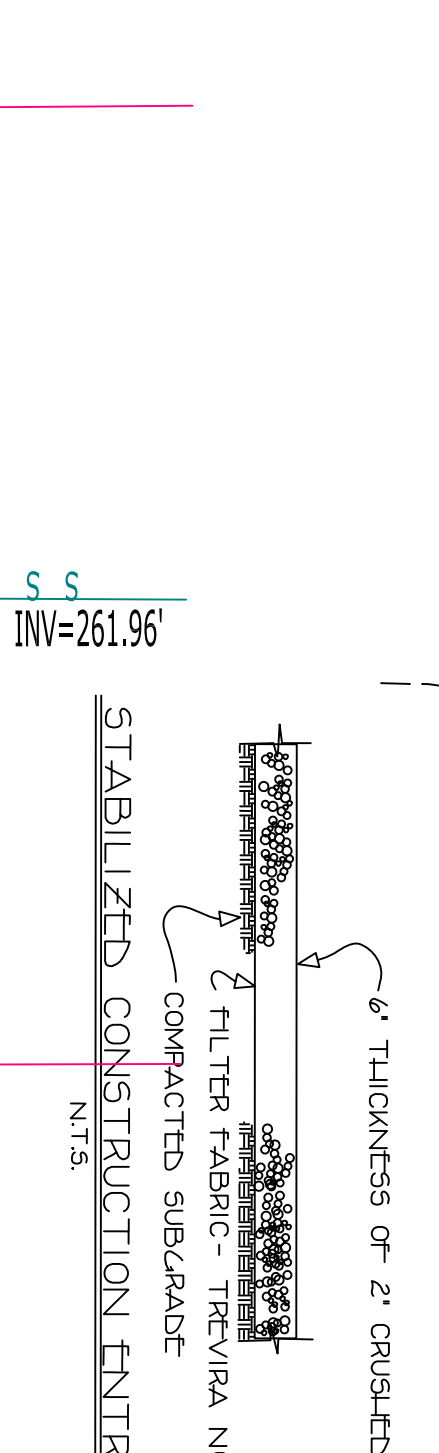
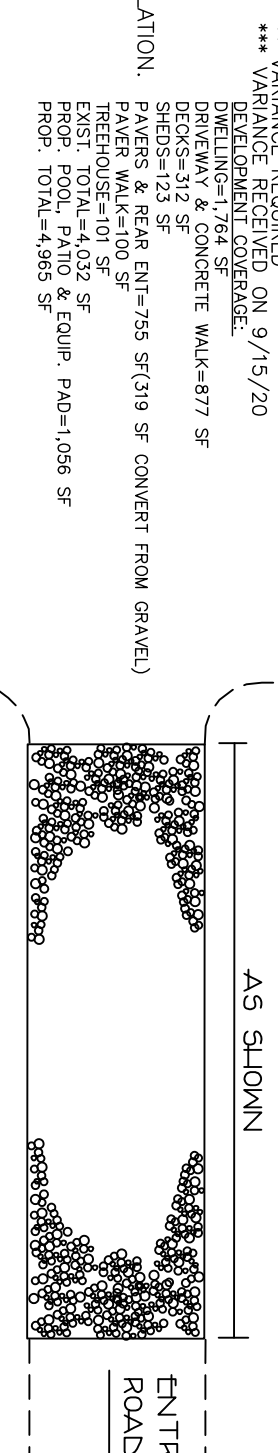
SEE PLAN FOR THE POOL.

SEE PLAN FOR THE POOL.

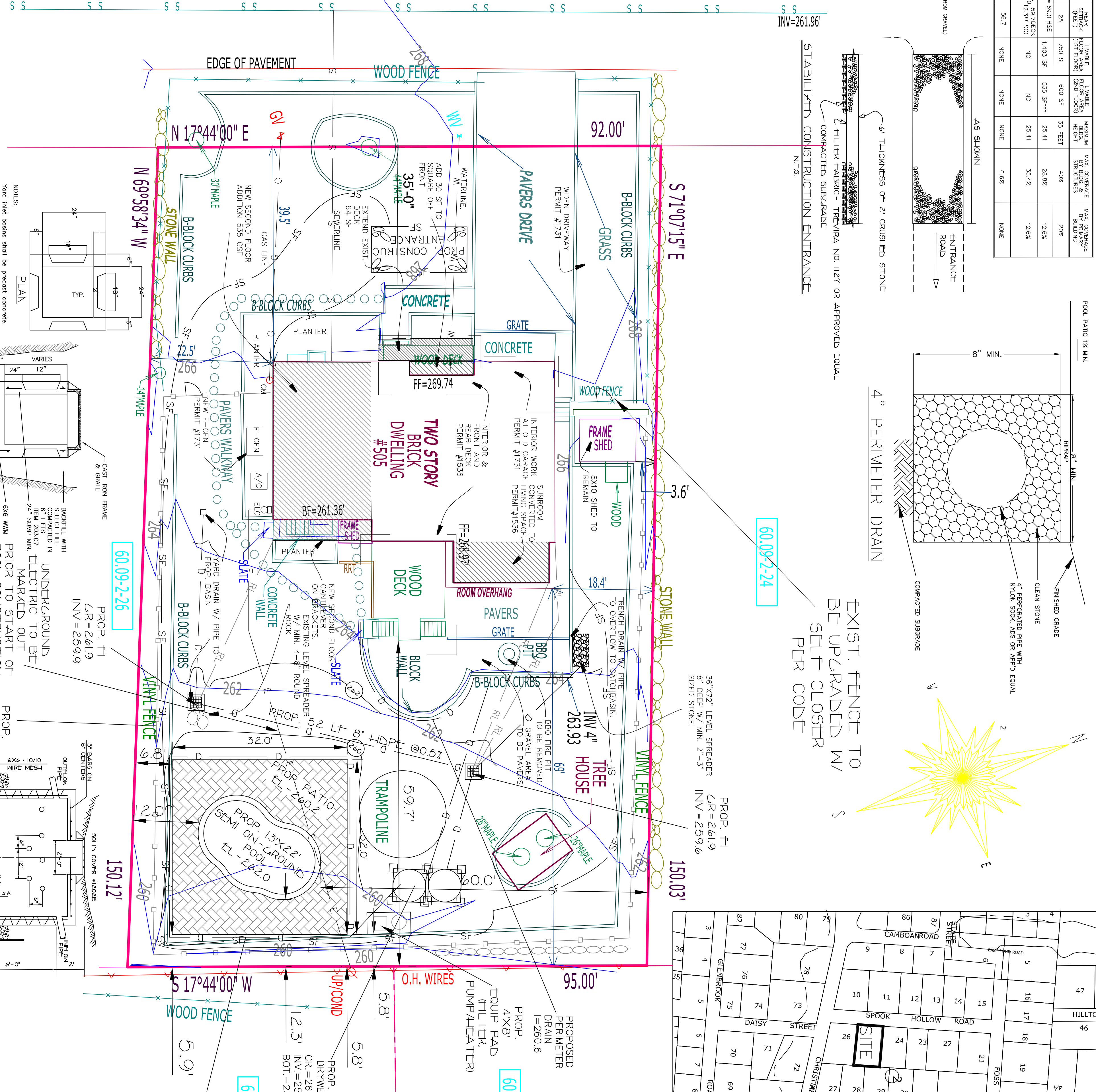
SEE PLAN FOR THE POOL.

SEE PLAN FOR THE POOL.

RESURFACE ZONE R-4 table with columns for MINIMUM FRONT YARD SETBACK, MINIMUM SIDE YARD SETBACK, etc.



SPOOK HOLLOW ROAD



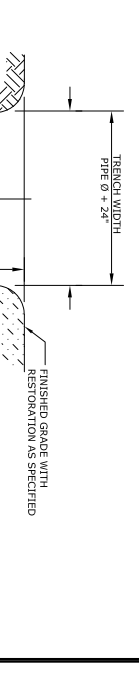
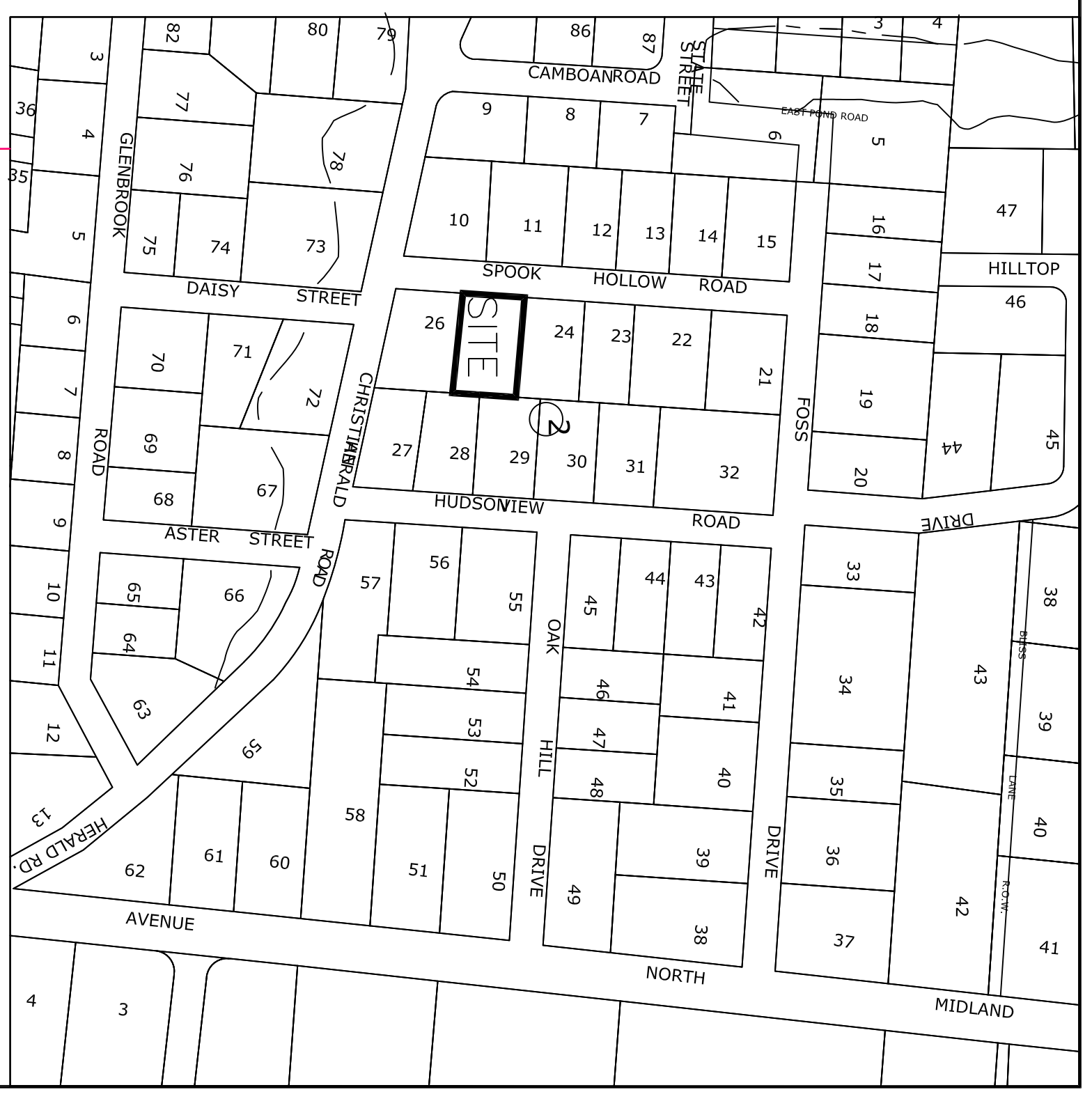
EXIST. FENCE TO BE UPGRADED W/ SELF-CLOSER PER CODE

PROPRIETARY INFORMATION

PROPRIETARY INFORMATION

PAUL GDANSKI, PE, PLLC 633 WOODMONT LANE SLOATSBURG, NEW YORK 10974

LOCATED IN VILLAGE OF UPPER NYACK TOWN OF CLARKSTON ROCKLAND COUNTY, NEW YORK



60.09-2-28 PROPOSED PERIMETER DRAIN I=258.4

60.09-2-29 PROPOSED PERIMETER DRAIN I=260.6

60.09-2-26 PROP. FT L=261.9 INV.=259.9

Table listing construction specifications for various materials and structures.

