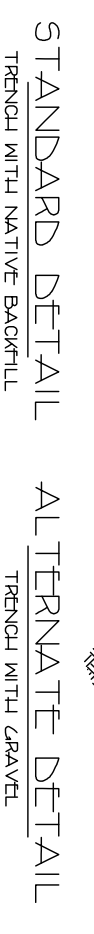
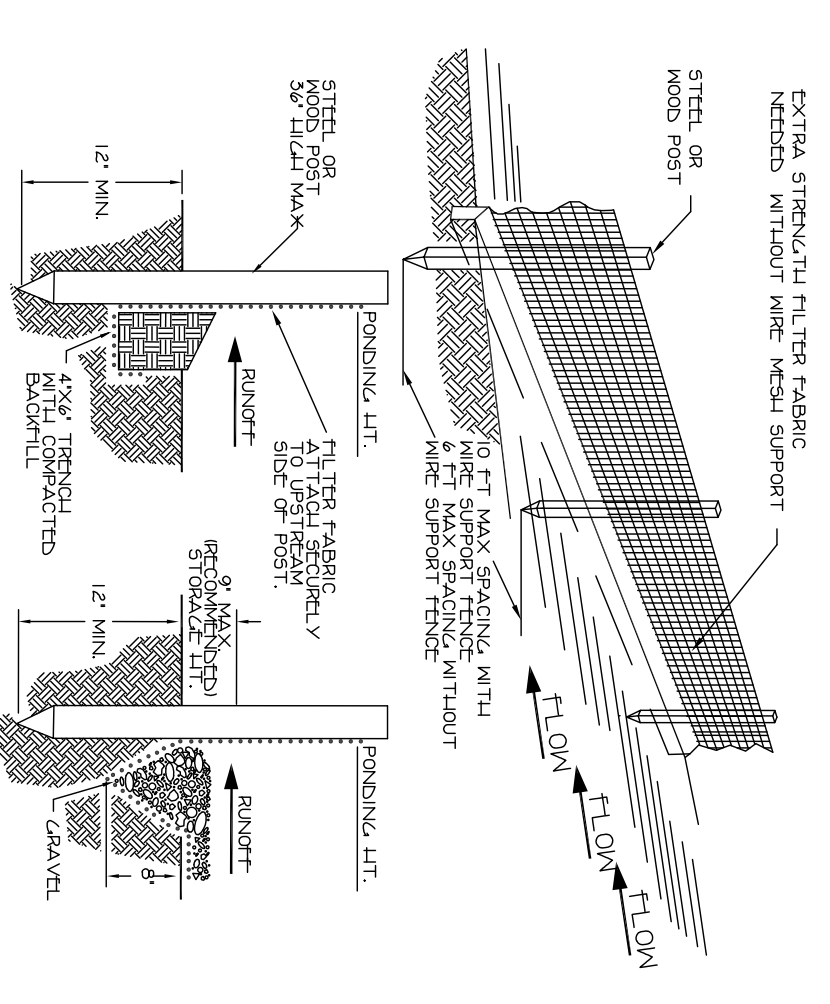
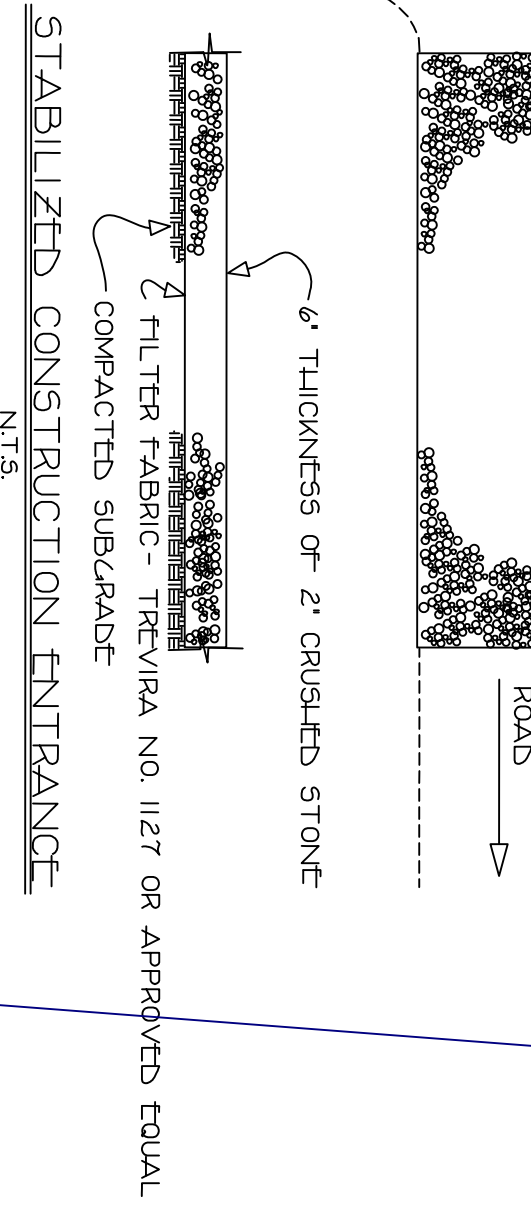
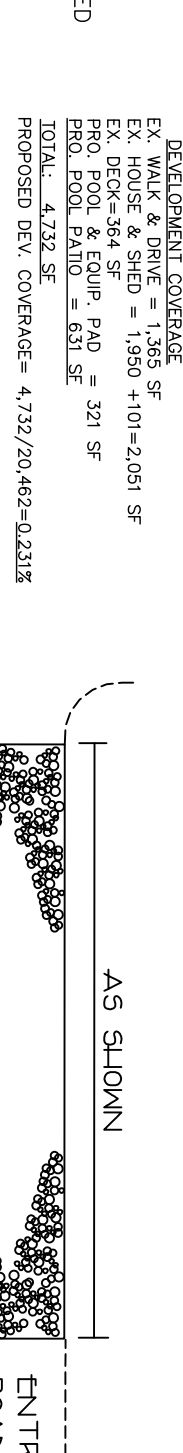


ALL BOUNDARY INFORMATION IS REFERENCED FROM A SURVEY PREPARED BY ANTHONY H. GEDRANO, PLS DATED JULY 9, 2020 & UNCORRECTED DATED 9-9-21.

NOTES:

1. SITE PLAN IS GOOD FOR 3 YEAR TIME PERIOD FROM DATE OF APPROVAL.
2. APPLICANT/OWNER: BOUZAKIS DRIVE
3. INFILTRATION RATE TO BE VERIFIED AT TIME OF CONSTRUCTION. DESIGN TO BE CHANGED AS NECESSARY. RATES WILL BE VERIFIED DONE IN ACCORDANCE WITH NYAC 9.05(2)(b) & 9.05(2)(c). ASSUMED RATE USED IN THE DESIGN. THE DESIGN SHALL BE MODIFIED AS NECESSARY BASED ON THE TEST RESULTS TO BE USED. A CARTRIDGE FILTER SYSTEM TO BE UTILIZED.
4. NO TREES ARE TO BE REMOVED.
5. EXCAVATED MATERIAL WILL BE REMOVED FROM SITE.
6. POOL CONTRACTOR TO INCORPORATE GROUNDWATER SAFETY MEASURES AS NECESSARY BUT NOT LIMITED TO: GROUNDWATER MONITORING SYSTEMS AND GROUNDWATER PUMP-OUT SYSTEMS.
7. SLOTTED DRAIN TO BE CONTINUOUS UNDER DECK.
8. AS THE POOL IS SEMI-INGROUND, A PORTION OF THE POOL IS ABOVE GROUND.
9. INFILTRATION TESTING SHALL BE DONE AT THE BOTTOM OF THE PRACTICE PRIOR TO INSTALLATION.

RESURFACE ZONE R-1											
	MINIMUM LOT AREA	FRONT SETBACK (FEET)	FRONT YARD SETBACK (FEET)	SIDE YARD SETBACK (FEET)	REAR YARD SETBACK (FEET)	MINIMUM FLOOR AREA (SQ. FT.)	MAXIMUM FLOOR AREA (SQ. FT.)	MAXIMUM HEIGHT	MAXIMUM COVERAGE BY BLDG. & STRUCTURES	MAXIMUM COVERAGE BY DRIVEWAY	MAXIMUM COVERAGE BY DRIVEWAY
RECO	20,000	100	35	25	25	800 SF	750 SF	35 FEET	25%	12%	
ENST	20,482	159.2	18.8*	23.1HSET	84.88ECC	NA	NA	<35 FEET	18.5%	9.5%	
PROD	20,482	159.2	18.8*	23.1HSET	84.88ECC	NA	NA	<35 FEET	23.1%	9.5%	
NET	NONE	NONE	NONE	NONE	NONE	NONE	NONE	NONE	4.6%	NONE	

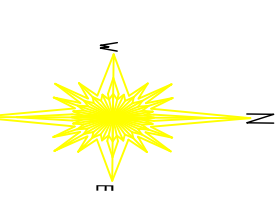
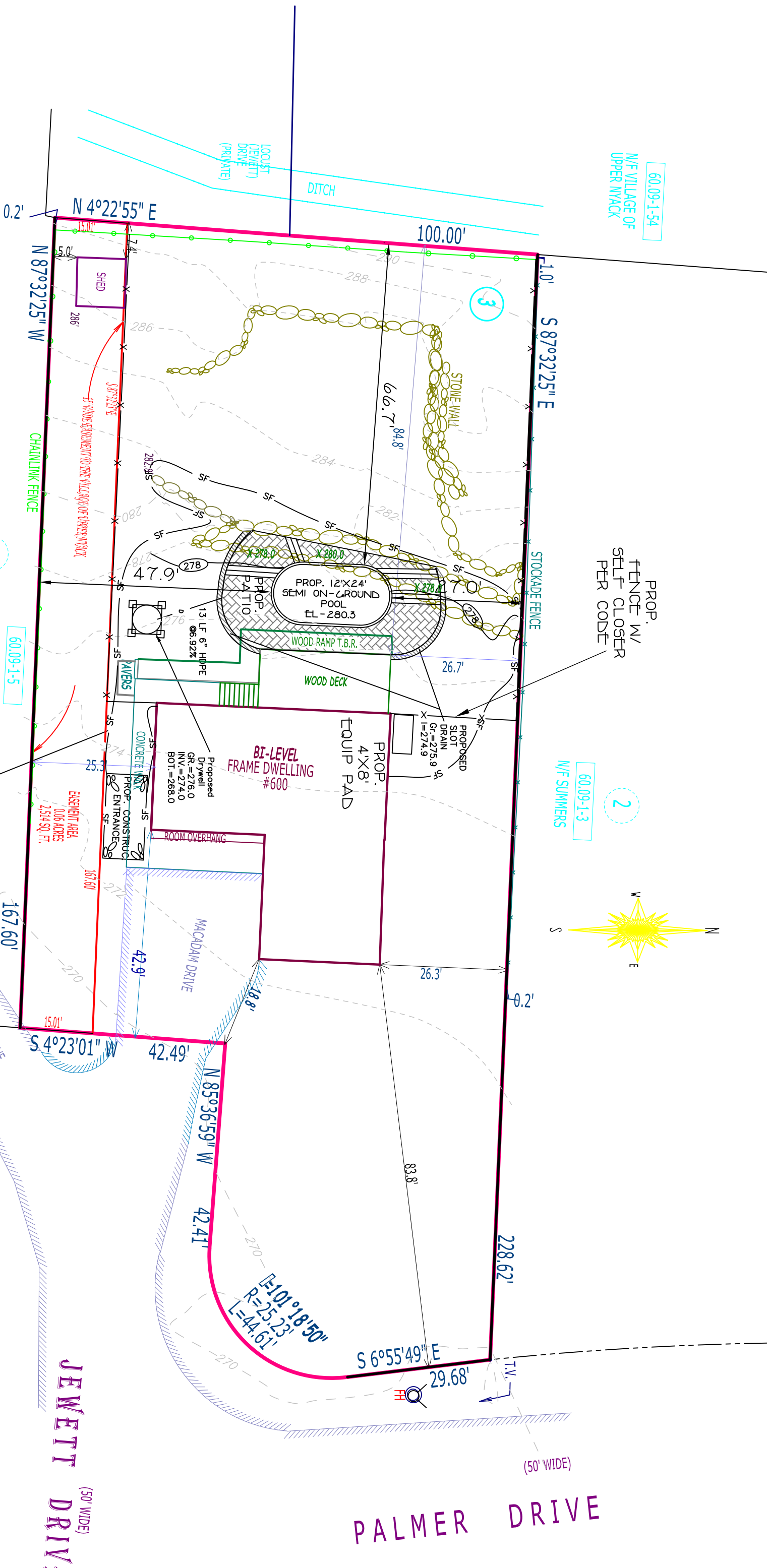
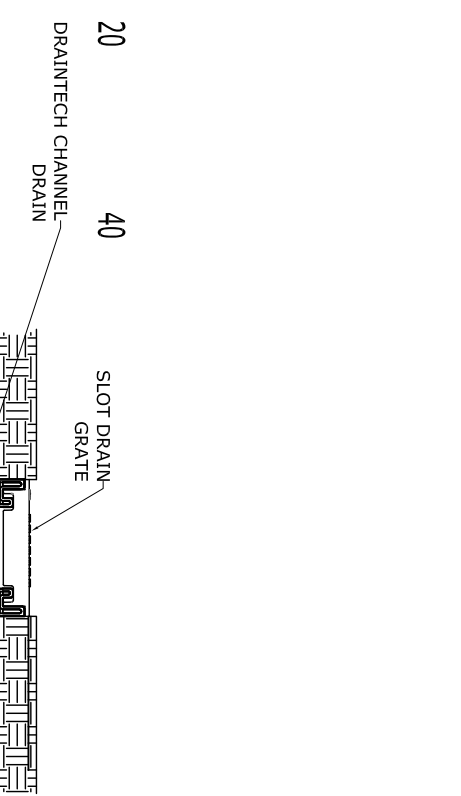
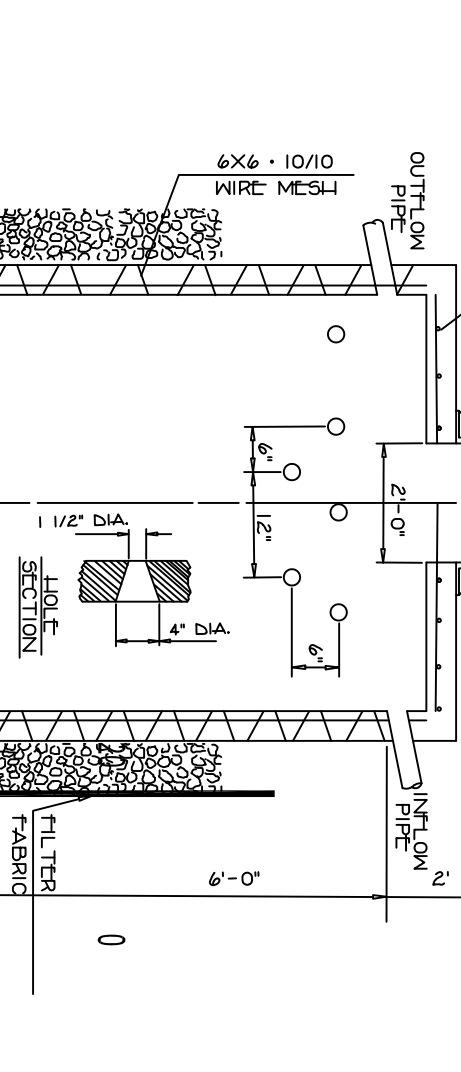
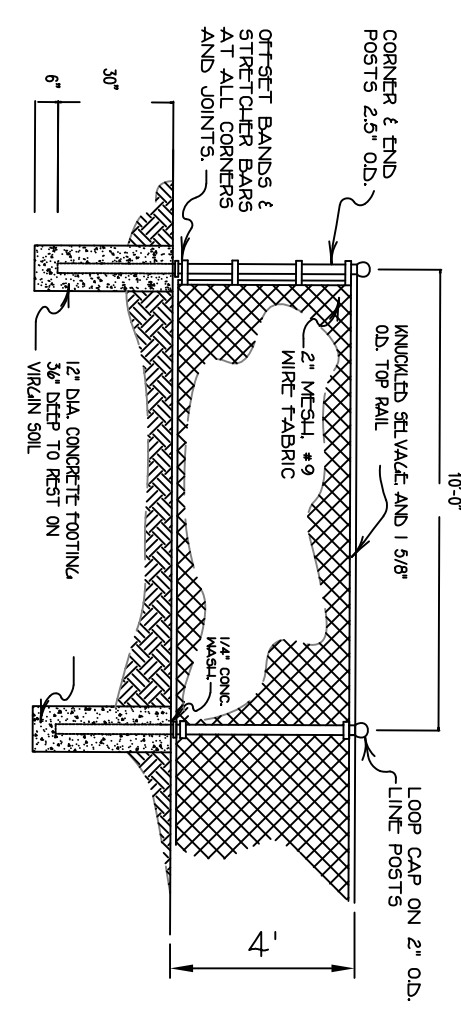


**STANDARD DETAIL**  
THROUGH NATIVE SWALE

**ALTERNATE DETAIL**  
THROUGH NATIVE SWALE

NOTE:  
LINESPECT AND REPAIR FENCE AFTER EACH RAINFALL EVENT. FENCE SHALL BE REPAIRED TO AN AREA THAT WILL NOT CONTRIBUTE TO EROSION. FENCE SHALL BE PERMANENTLY STABILIZED.  
CONSTRUCTION SHALL BE PLACED ON SLOPE.  
CONSTRUCTION SHALL BE PLACED ON SLOPE.

**SILT FENCE**  
N.T.S.



KEY MAP  
SCALE 1"=100'

Item	Description	Quantity	Unit	Notes
1	Excavation 12\"/>			
2	Excavation 18\"/>			
3	Excavation 24\"/>			
4	Excavation 30\"/>			
5	Excavation 36\"/>			
6	Excavation 42\"/>			
7	Excavation 48\"/>			
8	Excavation 54\"/>			
9	Excavation 60\"/>			
10	Excavation 66\"/>			
11	Excavation 72\"/>			
12	Excavation 78\"/>			
13	Excavation 84\"/>			
14	Excavation 90\"/>			
15	Excavation 96\"/>			
16	Excavation 102\"/>			
17	Excavation 108\"/>			
18	Excavation 114\"/>			
19	Excavation 120\"/>			
20	Excavation 126\"/>			
21	Excavation 132\"/>			
22	Excavation 138\"/>			
23	Excavation 144\"/>			
24	Excavation 150\"/>			
25	Excavation 156\"/>			
26	Excavation 162\"/>			
27	Excavation 168\"/>			
28	Excavation 174\"/>			
29	Excavation 180\"/>			
30	Excavation 186\"/>			
31	Excavation 192\"/>			
32	Excavation 198\"/>			
33	Excavation 204\"/>			
34	Excavation 210\"/>			
35	Excavation 216\"/>			
36	Excavation 222\"/>			
37	Excavation 228\"/>			
38	Excavation 234\"/>			
39	Excavation 240\"/>			
40	Excavation 246\"/>			
41	Excavation 252\"/>			
42	Excavation 258\"/>			
43	Excavation 264\"/>			
44	Excavation 270\"/>			
45	Excavation 276\"/>			
46	Excavation 282\"/>			
47	Excavation 288\"/>			
48	Excavation 294\"/>			
49	Excavation 300\"/>			
50	Excavation 306\"/>			
51	Excavation 312\"/>			
52	Excavation 318\"/>			
53	Excavation 324\"/>			
54	Excavation 330\"/>			
55	Excavation 336\"/>			
56	Excavation 342\"/>			
57	Excavation 348\"/>			
58	Excavation 354\"/>			
59	Excavation 360\"/>			
60	Excavation 366\"/>			
61	Excavation 372\"/>			
62	Excavation 378\"/>			
63	Excavation 384\"/>			
64	Excavation 390\"/>			
65	Excavation 396\"/>			
66	Excavation 402\"/>			
67	Excavation 408\"/>			
68	Excavation 414\"/>			
69	Excavation 420\"/>			
70	Excavation 426\"/>			
71	Excavation 432\"/>			
72	Excavation 438\"/>			
73	Excavation 444\"/>			
74	Excavation 450\"/>			
75	Excavation 456\"/>			
76	Excavation 462\"/>			
77	Excavation 468\"/>			
78	Excavation 474\"/>			
79	Excavation 480\"/>			
80	Excavation 486\"/>			
81	Excavation 492\"/>			
82	Excavation 498\"/>			
83	Excavation 504\"/>			
84	Excavation 510\"/>			
85	Excavation 516\"/>			
86	Excavation 522\"/>			
87	Excavation 528\"/>			
88	Excavation 534\"/>			
89	Excavation 540\"/>			
90	Excavation 546\"/>			
91	Excavation 552\"/>			
92	Excavation 558\"/>			
93	Excavation 564\"/>			
94	Excavation 570\"/>			
95	Excavation 576\"/>			
96	Excavation 582\"/>			
97	Excavation 588\"/>			
98	Excavation 594\"/>			
99	Excavation 600\"/>			
100	Excavation 606\"/>			
101	Excavation 612\"/>			
102	Excavation 618\"/>			
103	Excavation 624\"/>			
104	Excavation 630\"/>			
105	Excavation 636\"/>			
106	Excavation 642\"/>			
107	Excavation 648\"/>			
108	Excavation 654\"/>			
109	Excavation 660\"/>			
110	Excavation 666\"/>			
111	Excavation 672\"/>			
112	Excavation 678\"/>			
113	Excavation 684\"/>			
114	Excavation 690\"/>			
115	Excavation 696\"/>			
116	Excavation 702\"/>			
117	Excavation 708\"/>			
118	Excavation 714\"/>			
119	Excavation 720\"/>			
120	Excavation 726\"/>			
121	Excavation 732\"/>			
122	Excavation 738\"/>			
123	Excavation 744\"/>			
124	Excavation 750\"/>			
125	Excavation 756\"/>			
126	Excavation 762\"/>			
127	Excavation 768\"/>			
128	Excavation 774\"/>			
129	Excavation 780\"/>			
130	Excavation 786\"/>			
131	Excavation 792\"/>			
132	Excavation 798\"/>			
133	Excavation 804\"/>			
134	Excavation 810\"/>			
135	Excavation 816\"/>			
136	Excavation 822\"/>			
137	Excavation 828\"/>			
138	Excavation 834\"/>			
139	Excavation 840\"/>			
140	Excavation 846\"/>			
141	Excavation 852\"/>			
142	Excavation 858\"/>			
143	Excavation 864\"/>			
144	Excavation 870\"/>			
145	Excavation 876\"/>			
146	Excavation 882\"/>			
147	Excavation 888\"/>			
148	Excavation 894\"/>			
149	Excavation 900\"/>			
150	Excavation 906\"/>			
151	Excavation 912\"/>			
152	Excavation 918\"/>			
153	Excavation 924\"/>			
154	Excavation 930\"/>			
155	Excavation 936\"/>			
156	Excavation 942\"/>			
157	Excavation 948\"/>			
158	Excavation 954\"/>			
159	Excavation 960\"/>			
160	Excavation 966\"/>			
161	Excavation 972\"/>			
162	Excavation 978\"/>			
163	Excavation 984\"/>			
164	Excavation 990\"/>			
165	Excavation 996\"/>			
166	Excavation 1002\"/>			
167	Excavation 1008\"/>			
168	Excavation 1014\"/>			
169	Excavation 1020\"/>			
170	Excavation 1026\"/>			
171	Excavation 1032\"/>			
172	Excavation 1038\"/>			
173	Excavation 1044\"/>			
174	Excavation 1050\"/>			
175	Excavation 1056\"/>			
176	Excavation 1062\"/>			
177	Excavation 1068\"/>			
178	Excavation 1074\"/>			
179	Excavation 1080\"/>			
180	Excavation 1086\"/>			
181	Excavation 1092\"/>			
182	Excavation 1098\"/>			
183	Excavation 1104\"/>			
184	Excavation 1110\"/>			
185	Excavation 1116\"/>			
186	Excavation 1122\"/>			
187	Excavation 1128\"/>			
188	Excavation 1134\"/>			
189	Excavation 1140\"/>			
190	Excavation 1146\"/>			
191	Excavation 1152\"/>			
192	Excavation 1158\"/>			
193	Excavation 1164\"/>			
194	Excavation 1170\"/>			
195	Excavation 1176\"/>			
196	Excavation 1182\"/>			
197	Excavation 1188\"/>			
198	Excavation 1194\"/>			
199	Excavation 1200\"/>			
200	Excavation 1206\"/>			
201	Excavation 1212\"/>			
202	Excavation 1218\"/>			
203	Excavation 1224\"/>			
204	Excavation 1230\"/>			
205	Excavation 1236\"/>			
206	Excavation 1242\"/>			
207	Excavation 1248\"/>			
208	Excavation 1254\"/>			
209	Excavation 1260\"/>			
210	Excavation 1266\"/>			
211	Excavation 1272\"/>			
212	Excavation 1278\"/>			
213	Excavation 1284\"/>			
214	Excavation 1290\"/>			
215	Excavation 1296\"/>			
216	Excavation 1302\"/>			
217	Excavation 1308\"/>			
218	Excavation 1314\"/>			
219	Excavation 1320\"/>			
220	Excavation 1326\"/>			
221	Excavation 1332\"/>			
222	Excavation 1338\"/>			
223	Excavation 1344\"/>			
224	Excavation 1350\"/>			
225	Excavation 1356\"/>			
226	Excavation 1362\"/>			
227	Excavation 1368\"/>			
228	Excavation 1374\"/>			
229	Excavation 1380\"/>			
230	Excavation 1386\"/>			
231	Excavation 1392\"/>			
232	Excavation 1398\"/>			
233	Excavation 1404\"/>			
234	Excavation 1410\"/>			
235	Excavation 1416\"/>			
236	Excavation 1422\"/>			
237	Excavation 1428\"/>			
238	Excavation 1434\"/>			
239	Excavation 1440\"/>			
240	Excavation 1446\"/>			
241	Excavation 1452\"/>			
242	Excavation 1458\"/>			
243	Excavation 1464\"/>			
244	Excavation 1470\"/>			
245	Excavation 1476\"/>			
246	Excavation 1482\"/>			
247	Excavation 1488\"/>			
248	Excavation 1494\"/>			
249	Excavation 1500\"/>			
250	Excavation 1506\"/>			
251	Excavation 1512\"/>			
252	Excavation 1518\"/>			
253	Excavation 1524\"/>			
254	Excavation 1530\"/>			
255	Excavation 1536\"/>			
256	Excavation 1542\"/>			
257	Excavation 1548\"/>			
258	Excavation 1554\"/>			
259	Excavation 1560\"/>			
260	Excavation 1566\"/>			
261	Excavation 1572\"/>			
262	Excavation 1578\"/>			
263	Excavation 1584\"/>			
264	Excavation 1590\"/>			
265	Excavation 1596\"/>			
266	Excavation 1602\"/>			
267	Excavation 1608\"/>			
268	Excavation 1614\"/>			
269	Excavation 1620\"/>			
270	Excavation 1626\"/>			
271	Excavation 1632\"/>			
272	Excavation 1638\"/>			
273	Excavation 1644\"/>			
274	Excavation 1650\"/>			
275	Excavation 1656\"/>			
276	Excavation 1662\"/>			
277	Excavation 1668\"/>			
278	Excavation 1674\"/>			
279	Excavation 1680\"/>			
280	Excavation 1686\"/>			
281	Excavation 1692\"/>			
282	Excavation 1698\"/>			
283	Excavation 1704\"/>			
284	Excavation 1710\"/>			
285	Excavation 1716\"/>			
286	Excavation 1722\"/>			
287	Excavation 1728\"/>			
288	Excavation 1734\"/>			
289	Excavation 1740\"/>			
290	Excavation 1746\"/>			
291	Excavation 1752\"/>			
292	Excavation 1758\"/>			
293	Excavation 1764\"/>			
294	Excavation 1770\"/>			
295	Excavation 1776\"/>			
296	Excavation 1782\"/>			
297	Excavation 1788\"/>			
298	Excavation 1794\"/>			
299	Excavation 1800\"/>			
300	Excavation 1806\"/>			
301	Excavation 1812\"/>			
302	Excavation 1818\"/>			
303	Excavation 1824\"/>			
304	Excavation 1830\"/>			
305	Excavation 1836\"/>			
306	Excavation 1842\"/>			
307	Excavation 1848\"/>			
308	Excavation 1854\"/>			
309	Excavation 1860\"/>			
310	Excavation 1866\"/>			
311	Excavation 1872\"/>			
312	Excavation 1878\"/>			
313	Excavation 1884\"/>			
314	Excavation 1890\"/>			
315	Excavation 1896\"/>			
316	Excavation 1902\"/>			
317	Excavation 1908\"/>			
318	Excavation 1914\"/>			
319	Excavation 1920\"/>			
320	Excavation 1926\"/>			
321	Excavation 1932\"/>			
322	Excavation 1938\"/>			
323	Excavation 1944\"/>			
324	Excavation 1950\"/>			
325	Excavation 1956\"/>			
326	Excavation 1962\"/>			
327	Excavation 1968\"/>			
328	Excavation 1974\"/>			
329	Excavation 1980\"/>			
330	Excavation 1986\"/>			
331	Excavation 1992\"/>			
332	Excavation 1998\"/>			
333	Excavation 2004\"/>			
334	Excavation 2010\"/>			
335	Excavation 2016\"/>			
336	Excavation 2022\"/>			
337	Excavation 2028\"/>			
338	Excavation 2034\"/>			
339	Excavation 2040\"/>			
340	Excavation 2046\"/>			
341	Excavation 2052\"/>			
342	Excavation 2058\"/>			
343	Excavation 2064\"/>			
344	Excavation 2070\"/>			
345	Excavation 2076\"/>			
346	Excavation 2082\"/>			
347	Excavation 2088\"/>			
348	Excavation 2094\"/>			
349	Excavation 2100\"/>			
350	Excavation 2106\"/>			
351	Excavation 2112\"/>			
352	Excavation 2118\"/>			
353	Excavation 2124\"/>			
354	Excavation 2130\"/>			
355	Excavation 2136\"/>			
356	Excavation 2142\"/>			
35				